

GOLD



High gloss

Matte lacquer

Satin brushed

GOLD



Light patinated

Medium patinated

Heavy patinated

NICKEL



High gloss

Matte lacquer

Satin brushed

PLATIN



copyright by
FAUSTIG

platinum plated, high gloss

High gloss



copyright by
FAUSTIG

platinum plated, matte lacquer

Matte lacquer



copyright by
FAUSTIG

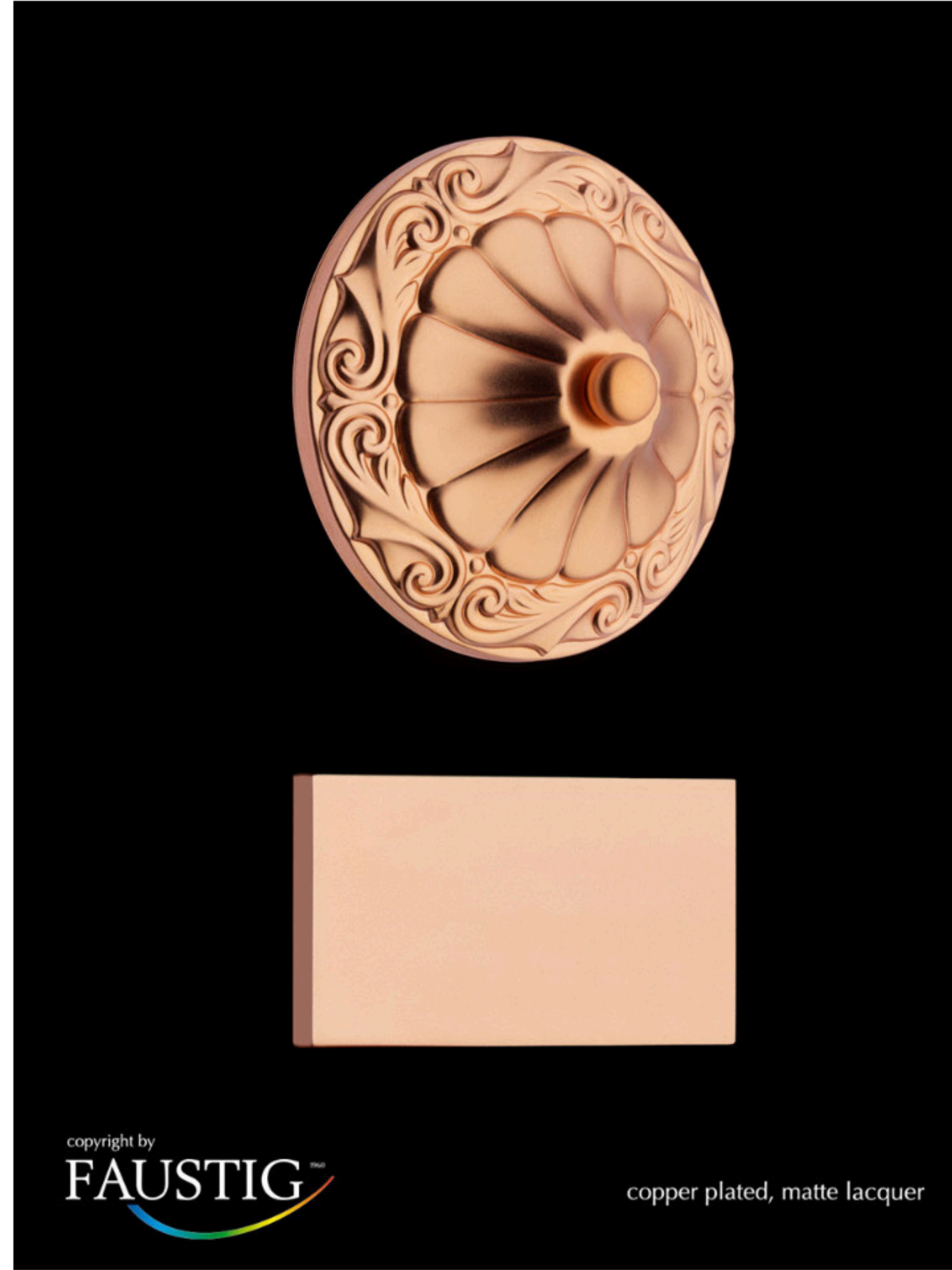
platinum plated, satin brushed

Satin brushed

COPPER



High gloss



Matte lacquer

COPPER



Light browned



Medium browned



Heavy browned

FINISHES

Standard Metal Finishes



GO
24 carat gold plated
high gloss



NI
nickel plated
high gloss

Special Metal Finishes



PT
platinum plated
high gloss
+25% of Strass price



SI
silver plated
high gloss
+10% of Strass price



ST
polished steel
only 70906 and 70904
+10% of Strass price

FINISHES

Matte Finishes



BR
satin brushed
+10% of Strass price



MA
matte laquer
+5% of Strass price

Antique Finishes



LPAT
light patinated
+5% of Strass price



MPAT
medium patinated
+5% of Strass price



HPAT
heavy patinated
+5% of Strass price

FINISHES



24K gold high
gloss



platinum high
gloss



copper high
gloss



nickel high gloss



gold light
patinated



24K gold matte
lacquer



platinum matte
lacquer



copper matte
lacquer



nickel matte
lacquer



gold medium
patinated



24K GOLD
satin brushed



PLATINUM
satin brushed



COPPER satin
brushed

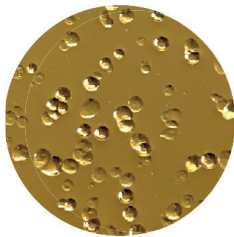


Nickel satin
brushed

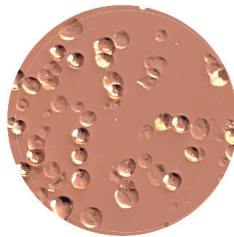


Gold heavy
patinated

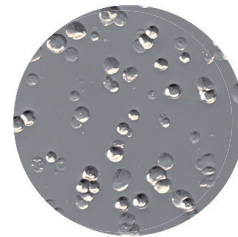
STRUCTURES



organic rocked
gold



organic rocked
copper



organic rocked
nickel



organic waved
gold



organic waved
copper



organic waved
nickel